

Location of Hinges and Handle

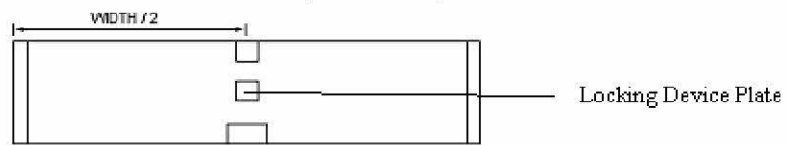
Steel plates are located inside the panel to allow a solid attaching point for the hardware.

* A dent of 1/16" x 1/8" (1.6mm x 3.2mm) in diameter on the inside face of each panel is the location of the steel plate for the center hinges. (See figure 4.4.B).

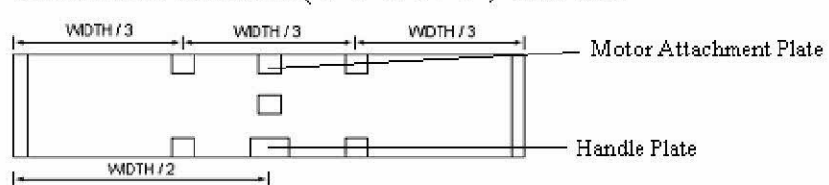
Multifunctional panels (Optional)*

***NOTE: THE
MULTIFUNCTIONAL
PANEL IS OPTIONAL**

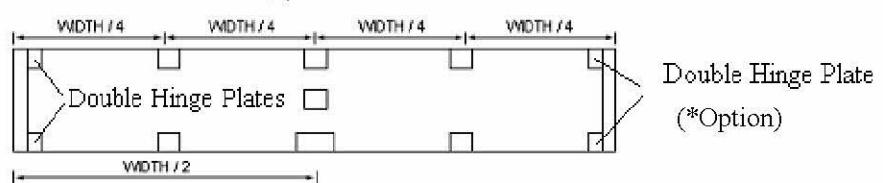
1219 mm to 2743mm (4'-0 to 9') wide door



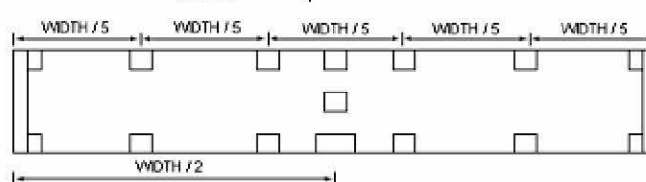
2769mm to 3505mm (9'-1" to 11'-6") wide door



3530mm to 4877mm (11'-7" to 16'-0") wide door



4902 mm to 6680 mm (16'-1" to 21'-11") wide door



6706 mm to 7315mm (22'-0" to 24'-0") wide door

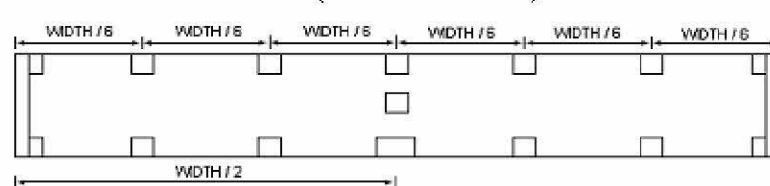


Figure 4.4.B: Location of steel plates for multifunctional panel